

**TECHNOL d.o.o.**  
ENGINEERING & GRP PRODUCTION L.r.d.

**TECHNOL  
SMART FILTER  
&  
WATER  
TREATMENT  
CONTROL UNIT**



This multifunctional Technol control system combines in one unit all control functions one may need for controlling the working of the filter or more filters at one time: filter control, and backwash control for pneumatic and electro valves.

This ensures the most optimal operation of all functions (no risk that one function may interfere with another one) and significantly reduces the installation and commissioning time.

The TECHNOL control panel is a top-class microprocessor-controlled PLC system in a compact housing with a standard 7" LCD touch screen.

## Standard features of the system:

On the touch screen you can easily:

- Visualize the performance of the water filtering system;
- Control the working of the filter, start/stop function;
- Full backwash filter control (time settings, visualization);
- Alarm for faults;

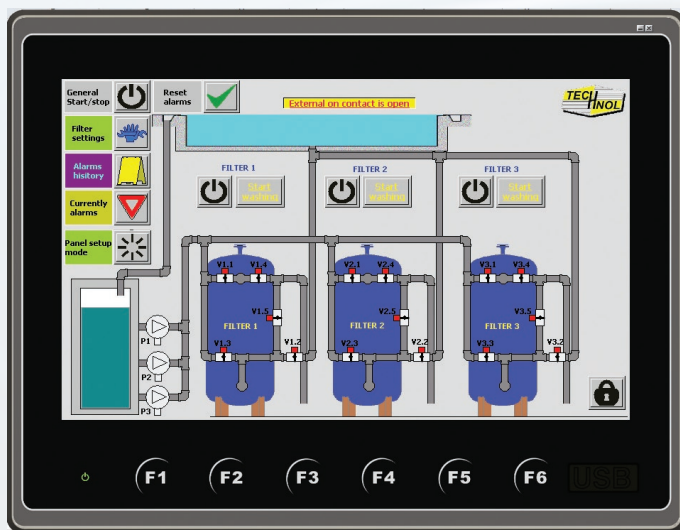
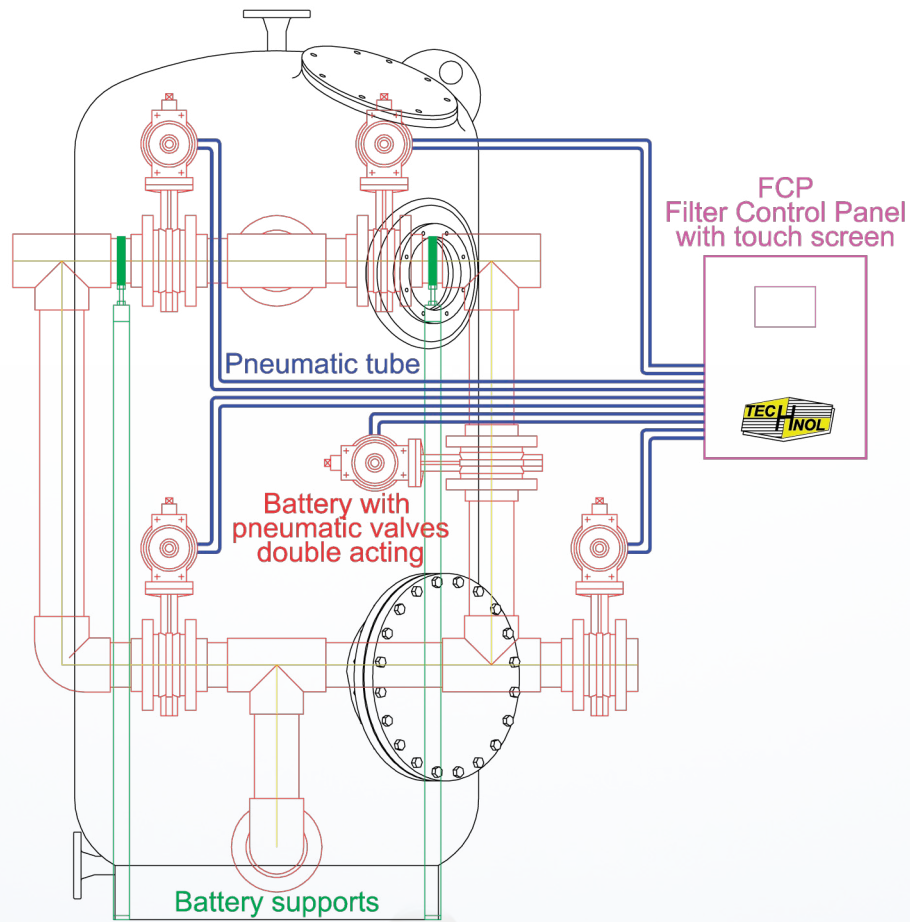
## Extra features can be installed:

- more filters in the water treatment system
- measuring the water level in the compensation tank with:
  - filter pump protection,
  - automatic water filling,
  - high level alarm,
- heating control,
- filtration flow monitor,
- water filling monitor,
- visualize chemical parameters,
- water effects control,
- underwater lighting control,
- internet connection for a remote monitoring of the system,
- mobile application,
- 8", 10", 12" touch screen,

**THE SYSTEMS ARE TAILOR MADE TO HAVE 100%  
CONTROL OF YOUR WATER FILTERING SYSTEM!**

**FEEL FREE TO CONTACT US FOR AN OFFER!**

# Filter Mediterran



# Questionnaire for offer:

1. Number of filters: \_\_\_\_\_
2. Number of filter pumps: \_\_\_\_\_
3. Backwashing with air-blower: yes / no
4. Automatic air release with pneumatic or electric valves: yes / no
5. Air compressor status (alarm): yes / no
6. Measuring the water level in the compensation tank with filter pump protection, automatic water filling and high level alarm: yes / no
7. Heating control of swimming pool water: yes / no
8. Filtration flow monitor: yes / no
9. Water filling monitor (water consumption): yes / no
10. Visualize chemical parameters (Cl, pH and Rx): yes / no
11. Water effects and underwater lighting control: yes / no
  - Number of water effects: \_\_\_\_\_
  - Number of underwater lights: \_\_\_\_\_
12. Internet connection for the remote monitoring of the system: yes / no
13. Mobile application: yes / no
14. Other requests:

---

---

---

---

---

---

---



**TECHNOL Portorož d.o.o.**  
PODJETJE ZA INŽENIRING IN PROIZVODNJO  
IZDELKOV IZ UMETNIH MAS

Industrijska c. 6e, 6310 IZOLA - SLOVENIJA  
Tel.: ++386/5/6625-340 Fax: ++386/5/6625-341  
E-mail: [technol@siol.net](mailto:technol@siol.net) [www.technol.si](http://www.technol.si)